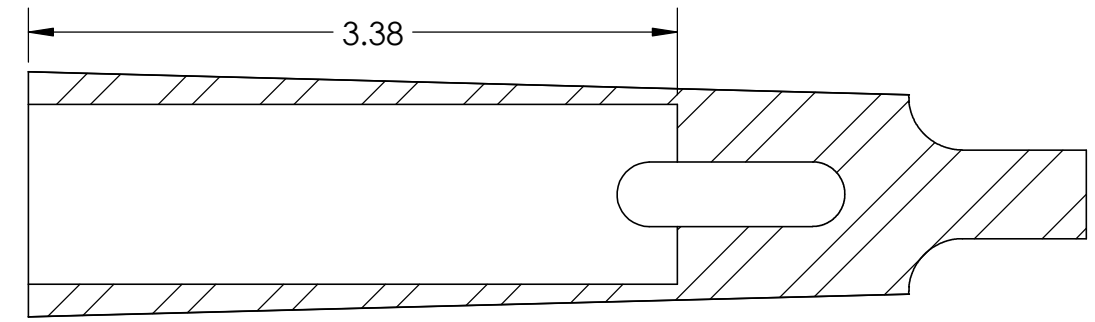
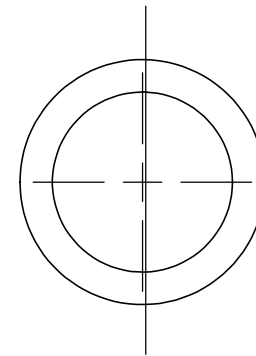


STEP 1

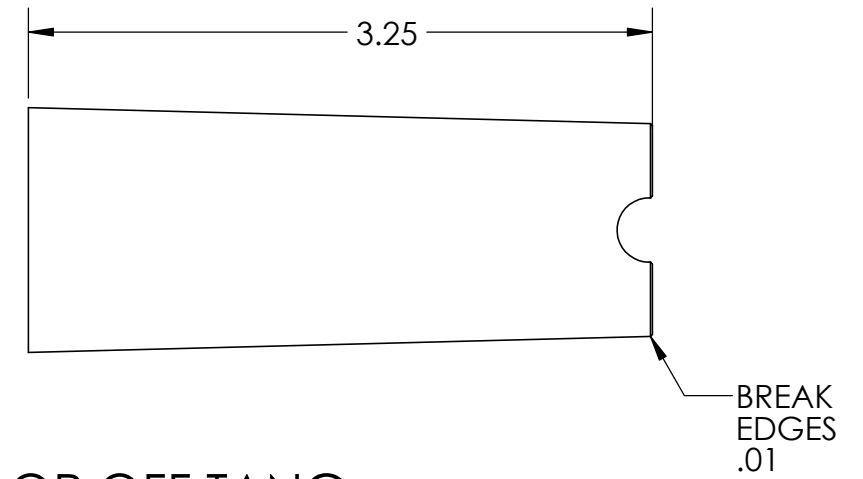


SECTION B-B

CORE DRILL  $15/16"$

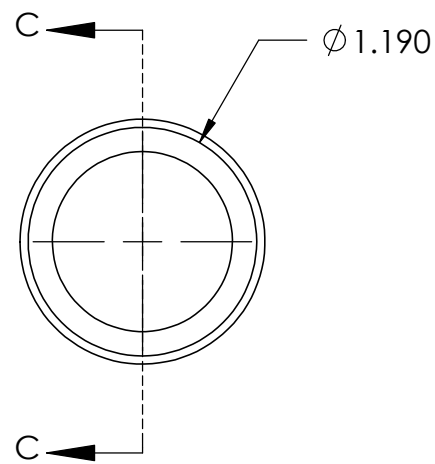


STEP 2

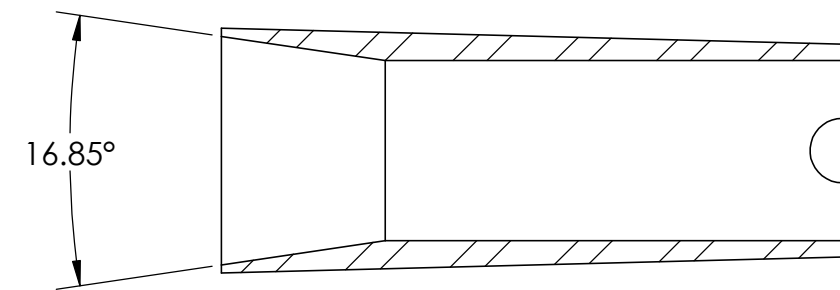


LOP OFF TANG

BREAK  
EDGES  
.01

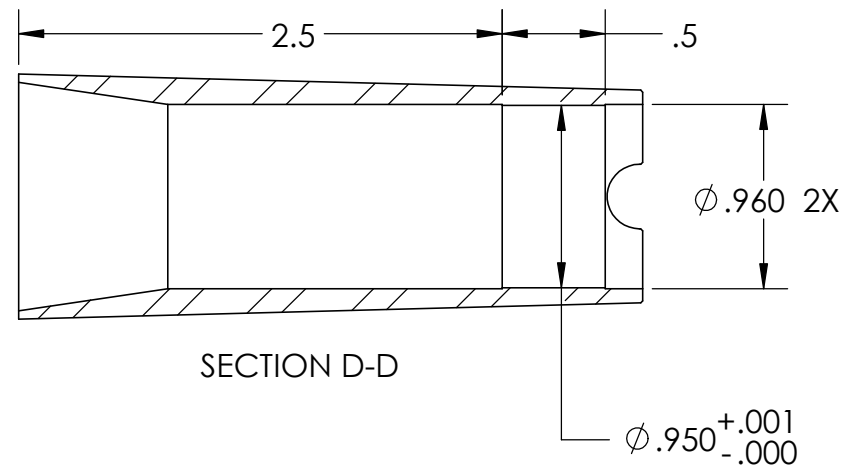
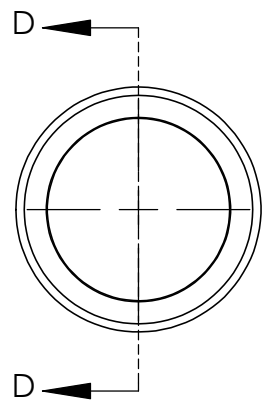


STEP 3



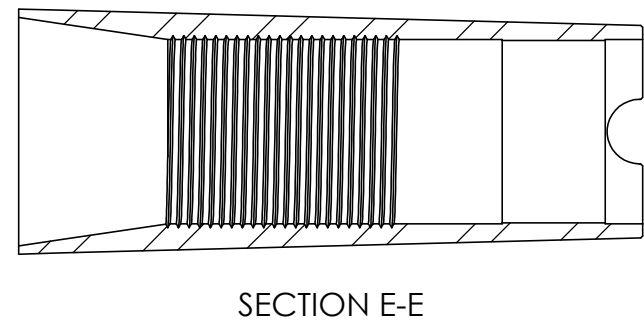
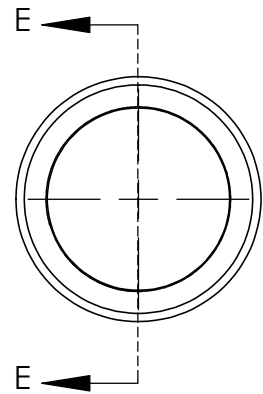
SECTION C-C

ROUGH IN THE R-8  
TAPER



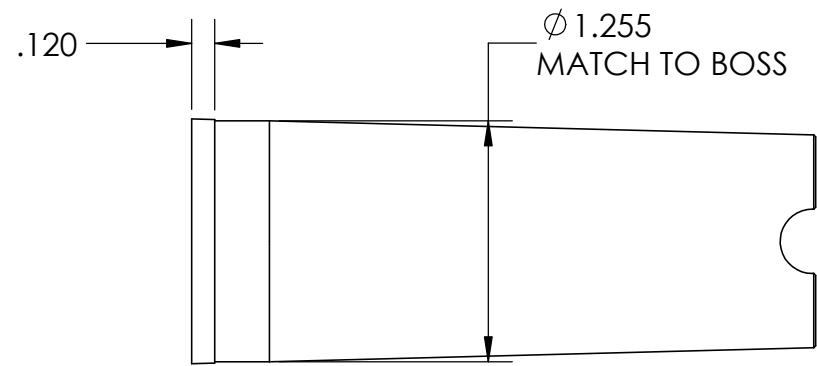
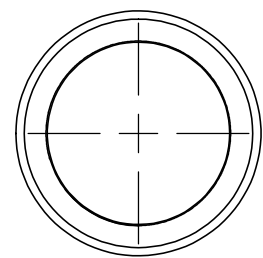
STEP 4

FINISH BORE DETAILS  
REAM THE BUSHING DIAMETER



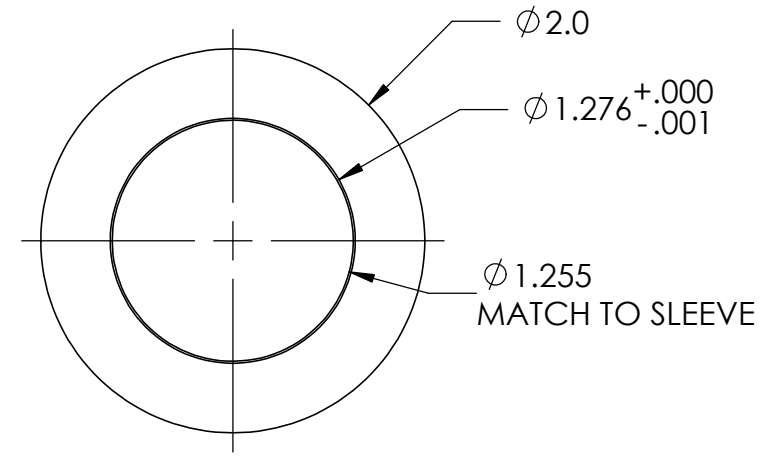
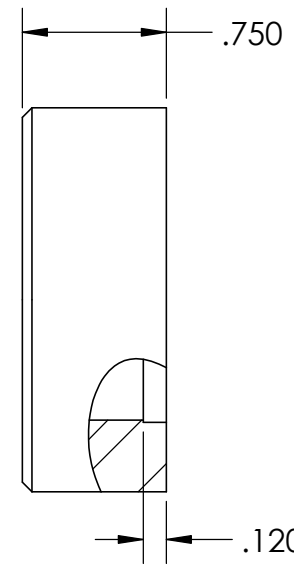
STEP 5

CUT 1-18 THREADS



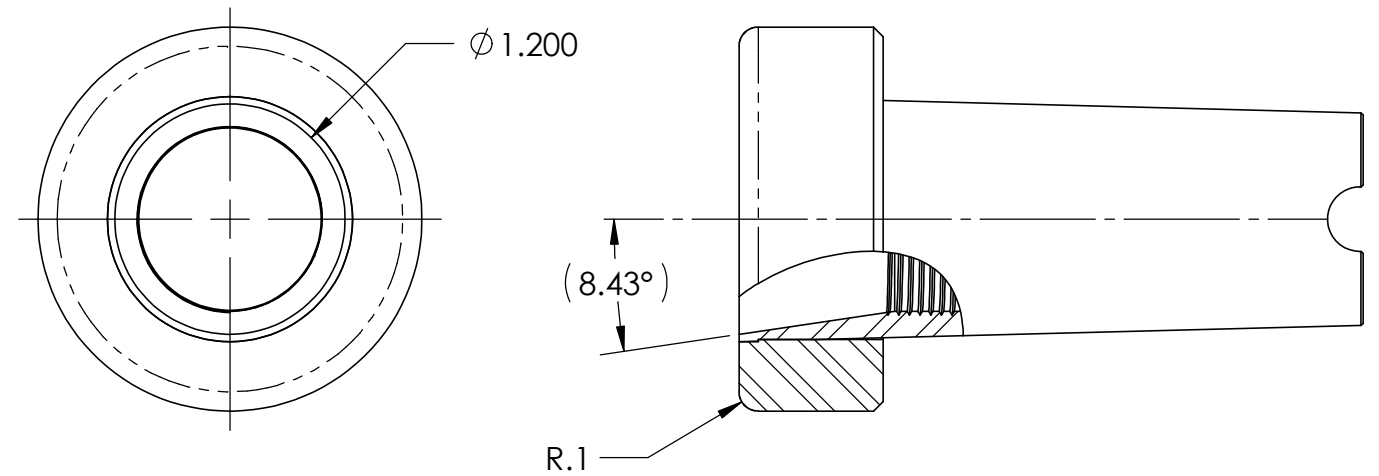
STEP 6

CREATE LAND FOR BOSS



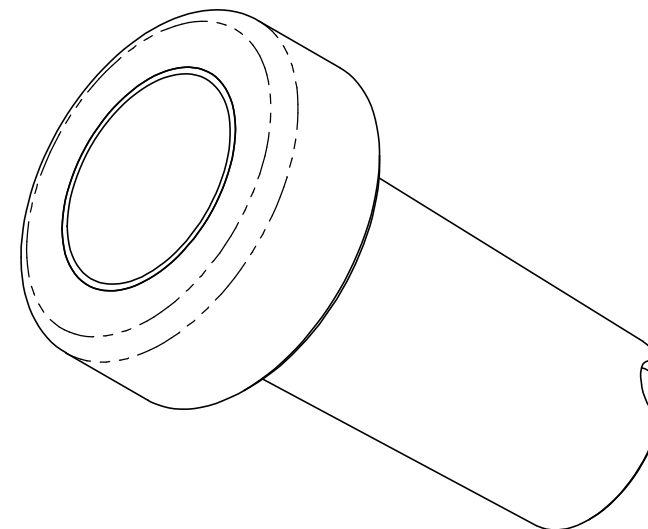
STEP 7

CREATE BOSS (4130 DOM TUBING)  
PRESS OR SHRINK FIT ONTO SLEEVE



STEP 8

FINISH R-8 TAPER ON FP-1  
TRIM FACE AND RADIUS EDGE ON LATHE



POLISH TO SUIT